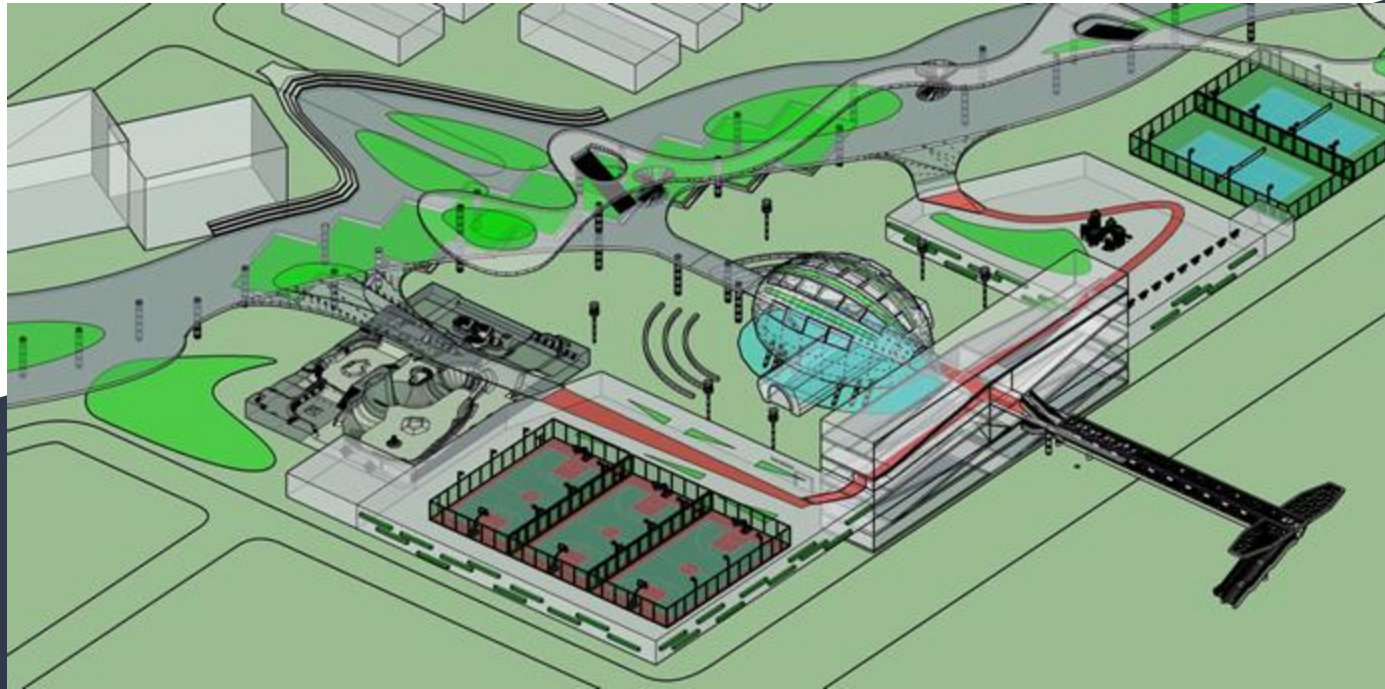


# Dreamway to the South-- Creating a Safe and Vibrant Community Hub in South Berkeley

Team 4: Skylar  
Erica  
Zixuan Liu  
Rongrui Fan



# Background

- Triangular intersection between Shattuck, Adeline, and Stuart streets
- Dangerous and inefficient crosswalk
- Unclear where pedestrians cross
- Confusing placement of crosswalk sign
- Unused patch of dry grass in the intersection
- Heavy traffic
- Lack of community cohesion
- Separation between commercial and residential

# The “Is” Condition



Complicated crossing. Easy to distract pedestrians and can cause higher risk of danger for the community .



Land largely used for parking. Greenery lack of quality. Land is both inaccessible and unattractive to the pedestrians.

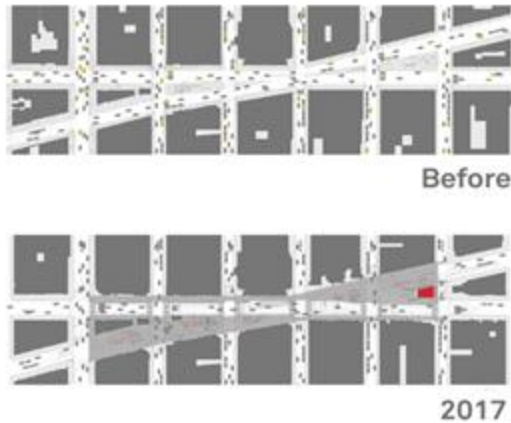


Hard to find parking near the shopping center. Walking through the parking lot is difficult for the pedestrians.

# Initial Ideas

- Re-do the crosswalk
  - Move location where pedestrians naturally cross
  - Motion sensor to start blinking lights to alert cars of people
- Garden in center of intersection to occupy unused space
  - Barrier between residential and commercial areas
  - Aesthetically pleasing
  - Involve community

# 1: Times Square Parasol



- 2.5 acres of pedestrian-only space in Manhattan's core
- Transformed a congested intersection into a civic space
- Traffic deviation
- New aesthetic
- Long-term physical, psychological, and economic benefits

# 2. Metropol



- Seville, Spain
- Massive timber structure
- Striking aesthetic
- Markets and restaurants
- Bounded by the dynamic shape of the parasols



### 3. Wujiaochang Parking



- Shanghai, China
- 5 roads interchanging
- Businesses and shops underneath
- Adds a buffer between the surrounding tall buildings
- Variety of architecture
- Now have become a symbol of Northern part of Shanghai (city nodes)

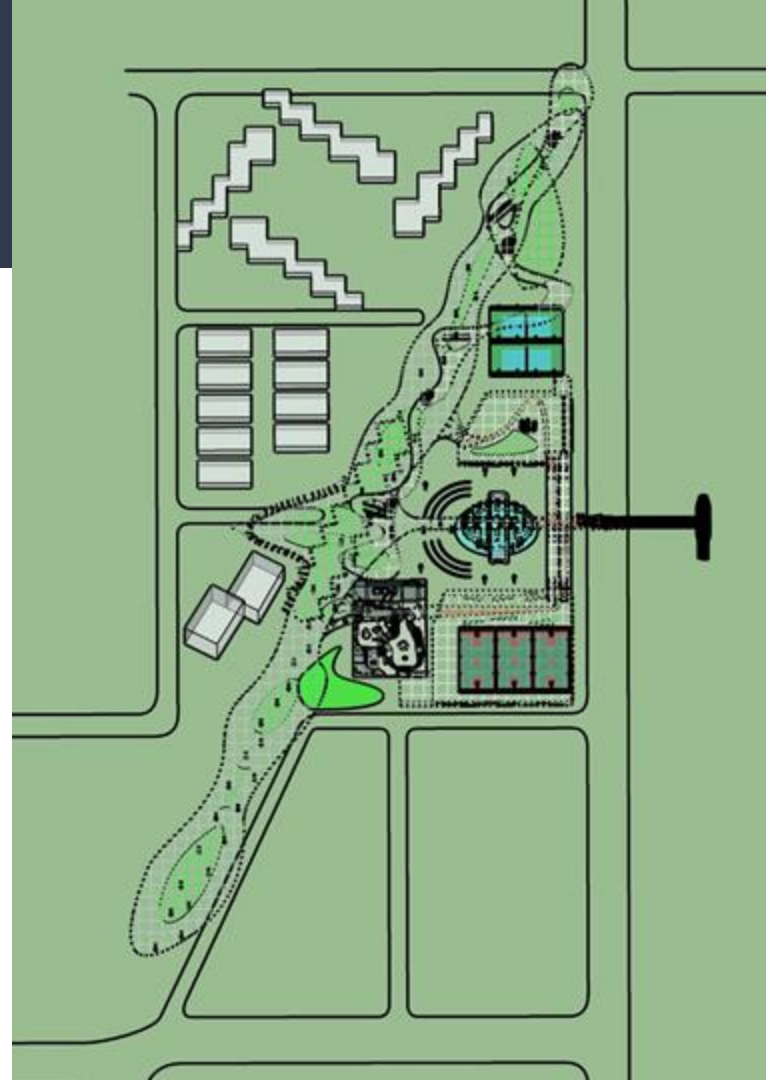
### 4. Santa Monica



- Dynamic circulation zone
- Reduces way-finding confusion
- Light-enhancement screen which is carefully crafted to bring light deep into the building structure, eliminating harsh glare at the edges

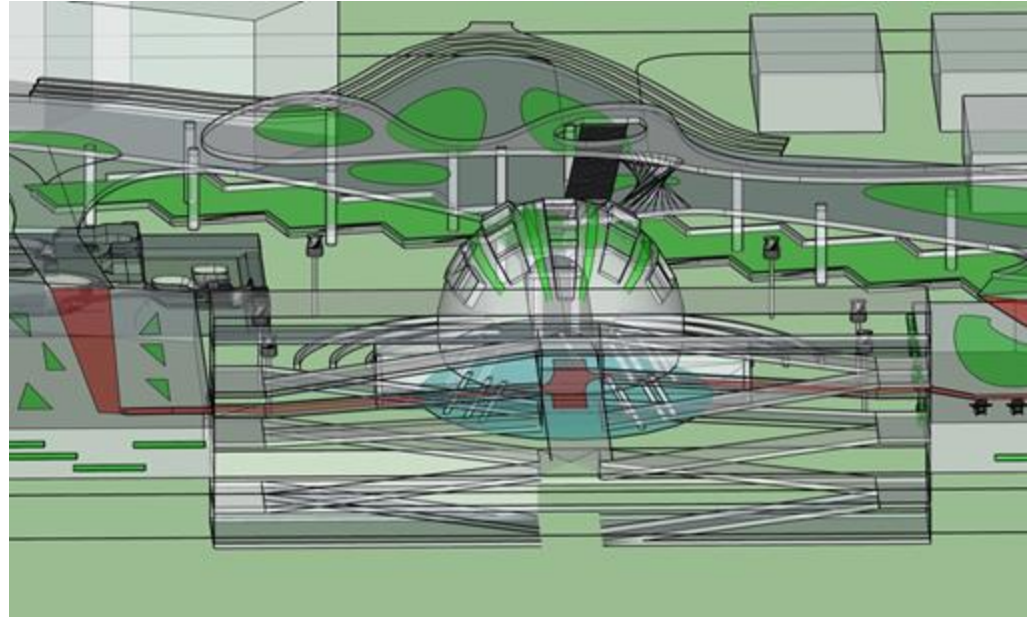
# Resolution Step 1: Traffic Deviation

- Deviate traffic on Adeline St. to Ashby Ave. and Shattuck Ave.
- For people driving in the area - they can go on Adeline and turn on Russell to enter the parking lot
- Oregon St. and Stuart St. will be blocked between Shattuck and Milvia Streets
- Create a bridge across Shattuck
  - The only entrance to our complex from the east side



# Step 2: Parking Concentration

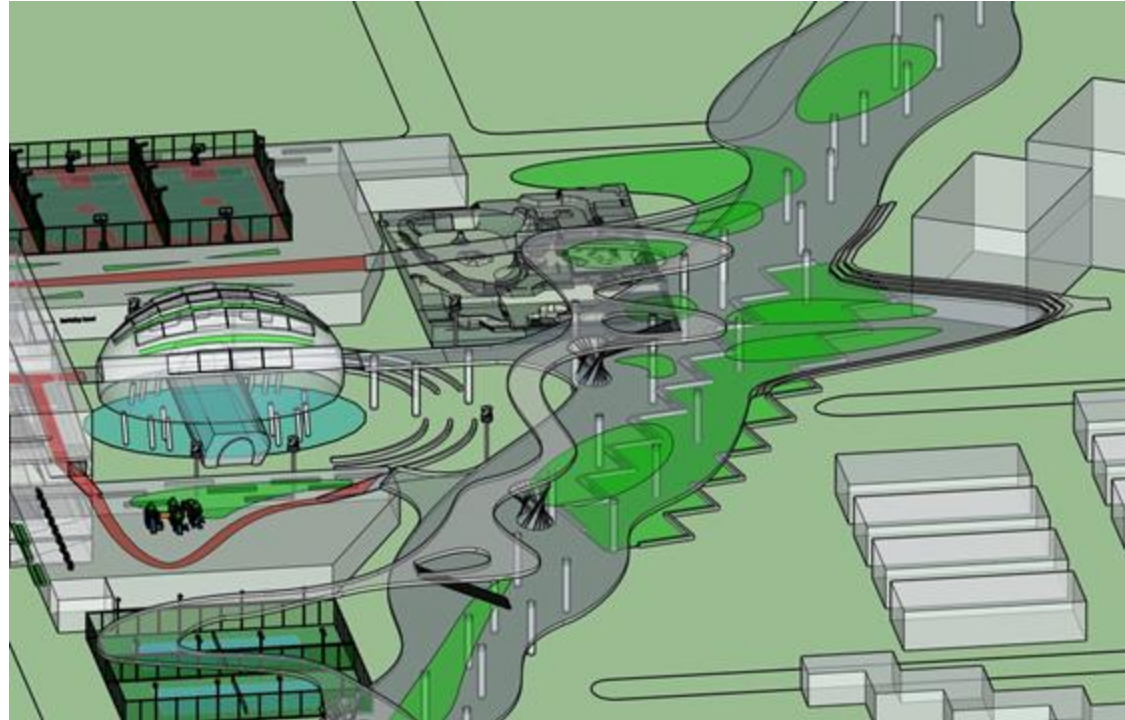
- Clear all the parking space around the Berkeley Bowl and Walgreens to create space
- For those who are here just for shopping, they may park within the parking lot
- The parking lot on the East side of the complex, connecting Walgreens and Berkeley Bowl forming a semi-closure, with the pedestrian bridge through it
- The main structure of the building will be like the Santa Monica parking structure 6
- Also clear the parking space on the northernmost Triangle block





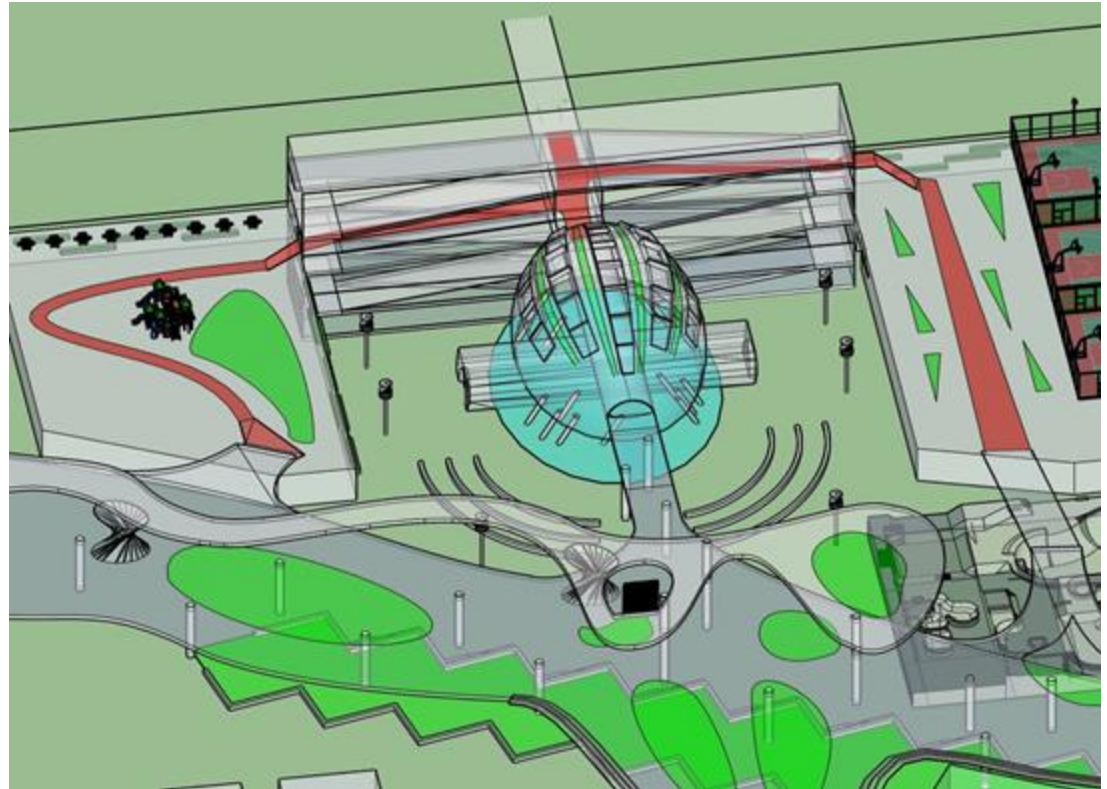
# Step3: Area Multiplation

- 3- layer pedestrian way, to make room for the complex and to add a fun element
- The lowermost one holds the most vegetation
- The uppermost is smaller in scale and vegetation area
- The second and third levels will consist of a Bezier Arch, which resembles the main structure of the Metropol Parsol in Seville, Spain
- The highest level would have a better view of the complex and even the SF Bay Area
- Rooftop area of Walgreens and Berkeley Bowl will be transformed into a playground and basketball court respectively



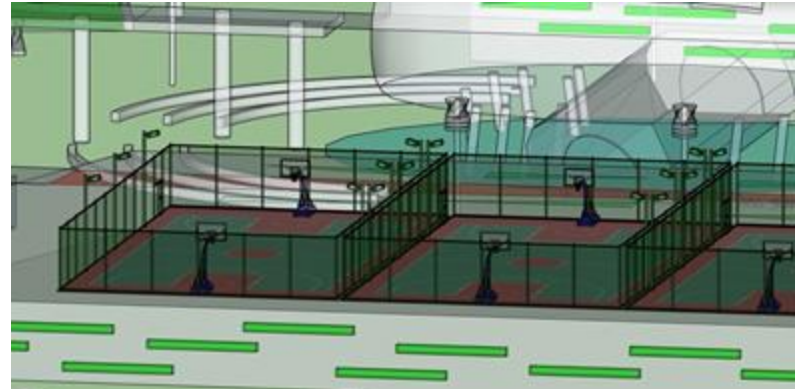
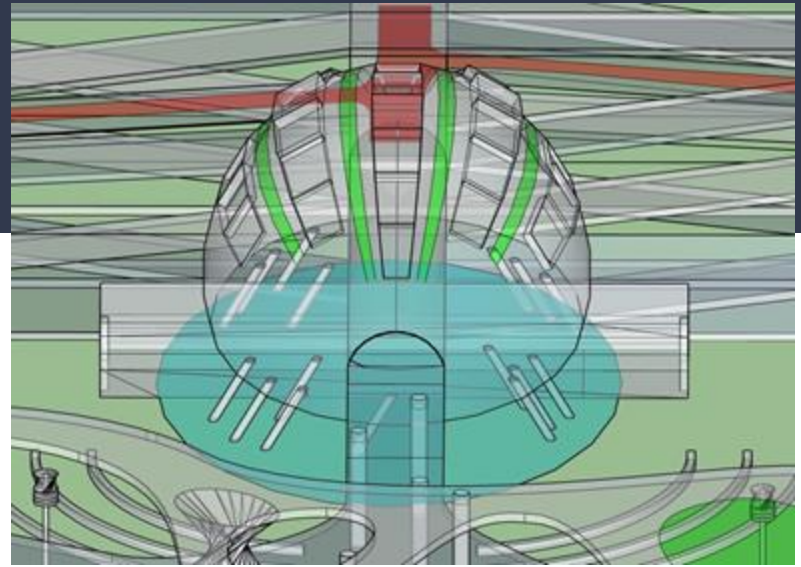
# Step4: Surfaces Connection

- To create unity, we decided to add numerous bridges
- The most conspicuous of which is the one connecting directly from the parking lot (entrance from the Oregon St) to the second pedestrian level (red in the right side illustration)
- This connection is continued by the bridge connecting the rooftop to the second level
- Each floor of the pedestrian level will be connected by a fluid shape staircase every 50m

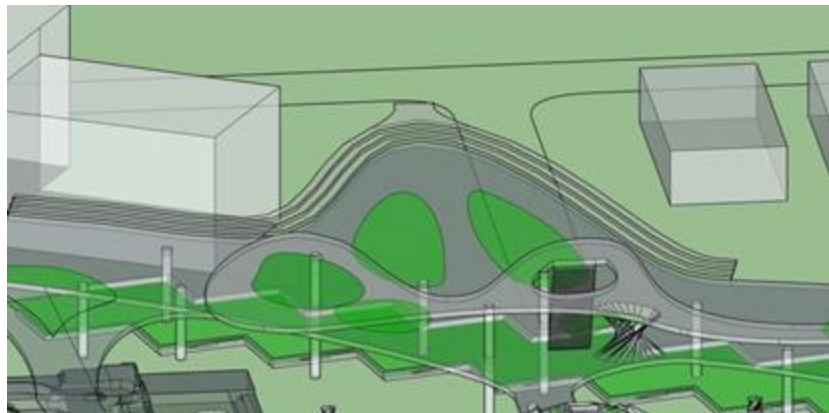


# Step5: Function Generalization

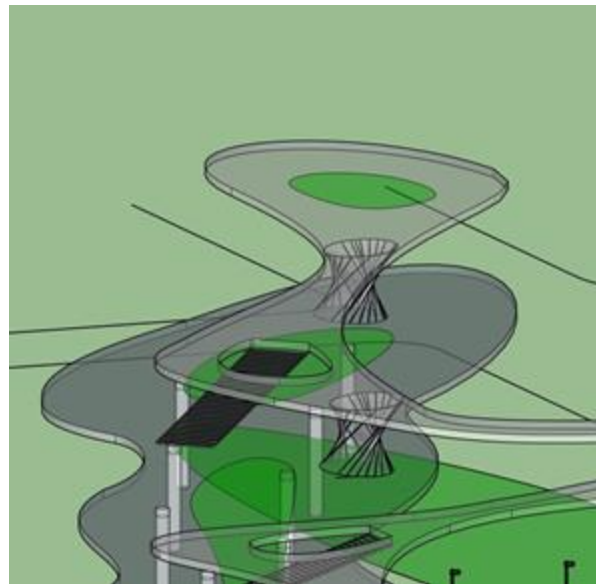
- Add more sports facilities wherever convenient - basketball court on rooftop of Berkeley Bowl and tennis court in the triangle block
- Giant ellipsoid at the center of the complex - anchor of attention and a culture symbol of South Berkeley
  - Reflection in the pond beneath it and arrays of seats toward it
- Coffee shop near the pond, perpendicular to the ellipsoid
  - For people passing by
- Skateboard park beside the Berkeley Bowl
- 2 viewing points in the pedestrian corridor - one on the former Oregon St. facing the Golden Gate, and the other on the north end facing the Campanile
  - Deepening their culture recognition of Berkeley and the Bay Area
- Complex accomplishing its functions of culture, sports, art, and self-recognition



# Function Generalization



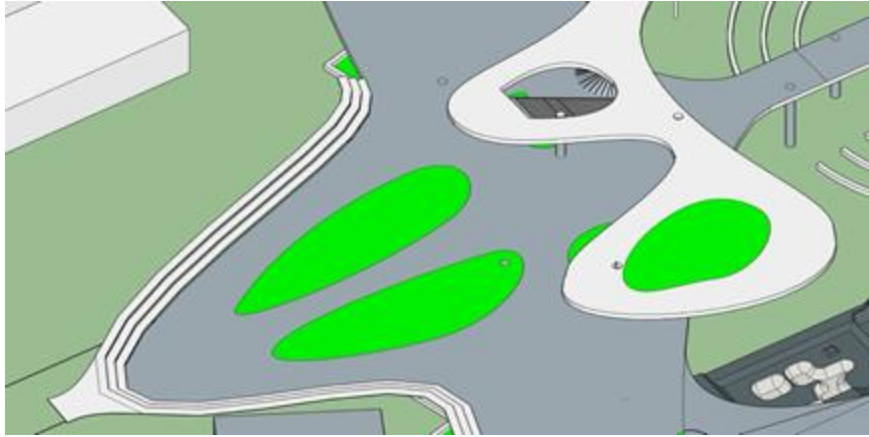
Viewpoint toward west San Francisco;Directly facing the Golden Gate



Viewpoint toward North-East to Berkeley Campanile. The height of each viewpoint together with the street acting as axis can guarantee the visibility from it.



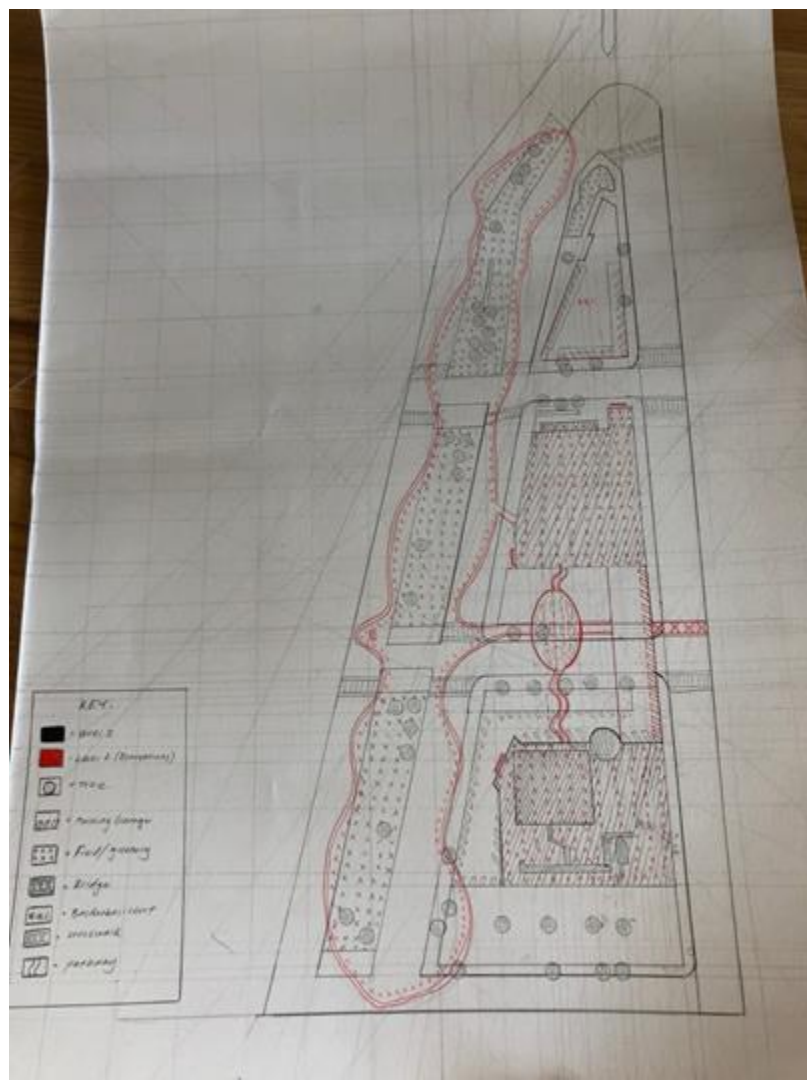
# Step6: Vegetation



- Add various vegetation to make this newly renovated complex full of life
- Each level of the pedestrian corridor, the ground, the rooftops, and even the facades of the buildings will be dotted green
- Finally viewing from the sky, this complex will have green as its main color



# General Plan (Precisely Measured Hand Drafted)



# The “Why”:

- Safer crosswalk
  - More pedestrian-friendly
  - Easier to move throughout the neighborhood
  - Easier for cars to see when pedestrians are there
- Garden benefits
  - Urban green space
  - Community cohesion, people working together
  - Access to healthy crops
  - Aesthetically pleasing
- Place to stop and be, not just pass through
  - “Node” of community life